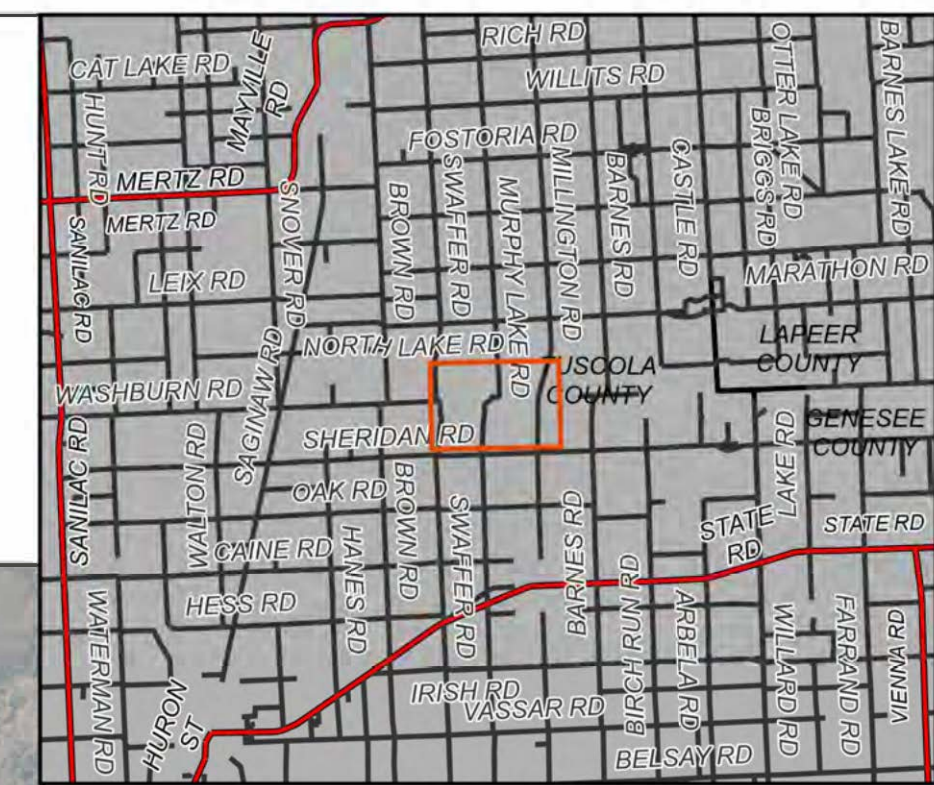


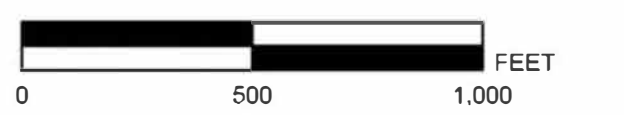
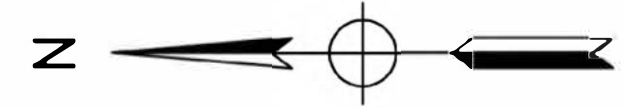


# TENTATIVE SPECIAL ASSESSMENT DISTRICT BOUNDARY MURPHY LAKE LEGAL LAKE LEVEL

TUSCOLA COUNTY, MICHIGAN

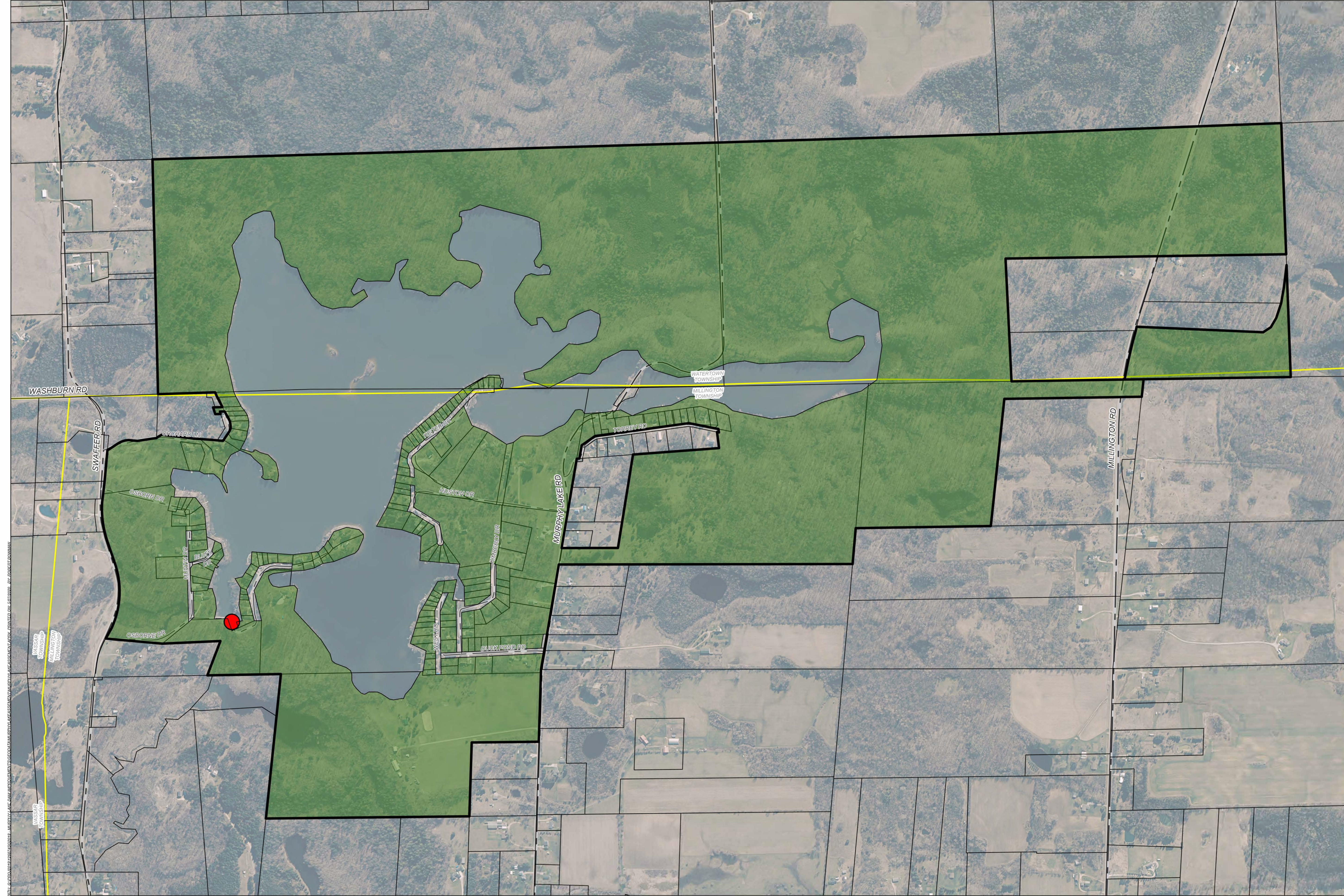


AREA MAP  
NOT TO SCALE



LEGEND

- WATER CONTROL STRUCTURE
- MUNICIPAL BOUNDARIES
- SPECIAL ASSESSMENT DISTRICT BOUNDARY
- COUNTY ROADS
- LOCAL ROADS



BY	MARK	REVISIONS	DATE

THE WORK REPRESENTED BY THIS DRAWING WAS DESIGNED BY THE ENGINEER FOR THIS SPECIFIC APPLICATION AND SPECIFIC LOCATION DESCRIBED HEREON IN ACCORDANCE WITH THE CONDITIONS PREVALENT AT THE TIME THE DESIGN WAS DONE. THE ENGINEER DOES NOT GUARANTEE AND WILL NOT BE LIABLE FOR ANY OTHER LOCATION, CONDITION, DESIGN OR PURPOSE.

MURPHY LAKE  
TUSCOLA COUNTY, MICHIGAN

## TENTATIVE SPECIAL ASSESSMENT DISTRICT BOUNDARY

SAGINAW'S OFFICE  
200 S. Washington Ave.  
Saginaw, MI 48607  
Tel. 989-754-4717  
www.SpicerGroup.com

DE BY: PL DR BY: RTB	CH BY: LOO APP BY: RBH	PROJECT NO. 126234SG2018
STDS.	SHEET 1 OF 1	DR 1
DATE: May 2020 SCALE: AS SHOWN	FILE NO.	

P:\18\180502\180502022 - MURPHY LAKE SPECIAL ASSESSMENT DISTRICT BOUNDARY.dwg, PRINTED ON: 5/22/2020, 10:05:07 AM